

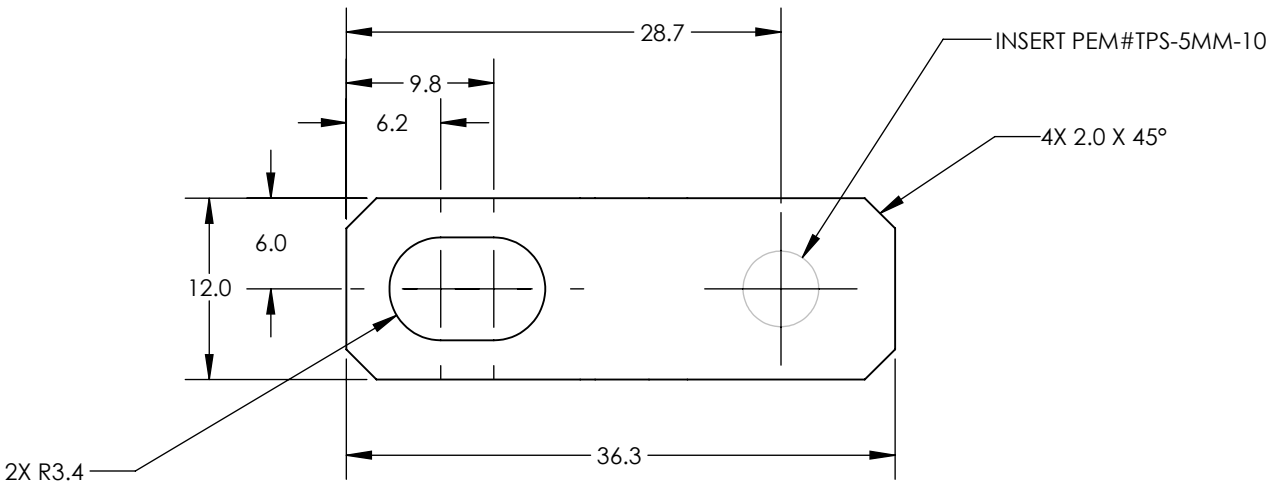
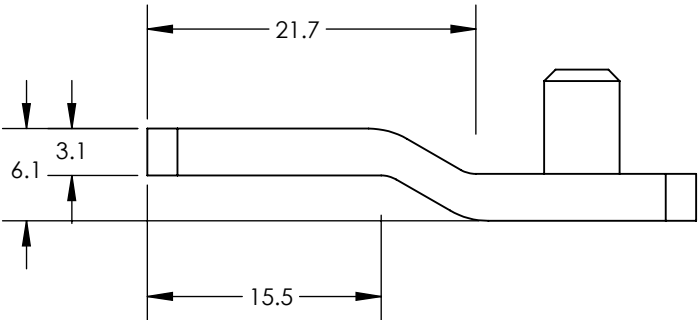
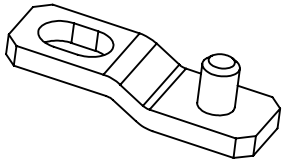
NOTES:

UNLESS OTHERWISE NOTED:

1. REMOVE ALL BURRS AND SHARP EDGES.
2. TO BE PACKAGED IN A MANNER TO ELIMINATE DAMAGE DUE TO SHIPPING AND HANDLING.
3. THIS DOCUMENT IS INTENDED FOR REFERENCE ONLY. REFER TO CAD MODEL FOR DIMENSIONS NOT STATED. DIMENSIONS NOT STATED ARE +/- .10

REVISIONS

REV.	DESCRIPTION	DATE	APPROVED	DCN #
P1	INITIAL RELEASE	03-29-13	T.F.	



ALL COMPONENTS AND PROCESSES TO BE RoHS 6/6 COMPLIANT.

MATERIAL:

ALUM
6061-T6

UNLESS OTHERWISE SPECIFIED:

DIMENSIONS ARE IN mm
TOLERANCES:

0 PLACE± 2.5
1 PLACE± 0.4
2 PLACE± 0.10
ANGULAR± 0.5°
SURFACE FINISH: 1.5µm/

FINISH:

N/A

PROPRIETARY AND CONFIDENTIAL

THE INFORMATION CONTAINED IN THIS DRAWING IS THE SOLE PROPERTY OF COMMUNICATION COMPONENT FILTERS, INC. ANY REPRODUCTION IN PART OR AS A WHOLE WITHOUT THE WRITTEN PERMISSION OF COMMUNICATION COMPONENT FILTERS, INC. IS PROHIBITED.

	NAME	DATE
DRAWN	S.BRUNELLE	03-29-2013
MECH ENG.	T.FERRELL	03-29-2013
ELEC ENG.	B.TURCOTTE	03-29-2013

WEIGHT: (3.6 g.)

SURFACE AREA: (1225.0 sq mm.)



THIRD ANGLE
PROJECTION

PROJECT NO: 158



COMMUNICATION COMPONENT
FILTERS, INC.
145 BATCHELDER RD.
SEABROOK, NH 03874

TITLE:

BRACKET, FRONT, DAS TRAY

SIZE **B**

DWG. NO.

107-0096

REV

P1

SCALE: 5:1

SHEET 1 OF 1

107-0096-01

PART NUMBER