

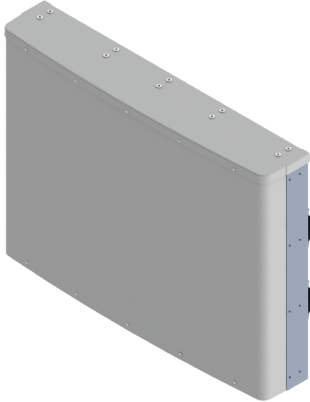


Antennas

DATA SHEET

Six/Three Beam Special Events Antenna

MBA6-11F-CP-H3



- Three foot (1.0 m), single panel, with three beams covering 817-869 MHz and six beams covering 1850-1995 MHz
- Three low band beams optimized for maximum throughput over frequency bands (817-869 MHz); Six high band beams optimized for maximum throughput over frequency bands (1850-1995 MHz)
- Dual +/- 45° cross-polarization for each beam pair
- Separate beams support 3 low band and 6 high-band sub-sectors
- Simultaneous High Band PCS 1900 MHz, SMR 850 MHz and Cellular 850 Coverage.
- Enables efficient evolution of wireless networks.
- Increases site capacity through high order sectorization.
- Avoid carrier-adds and building of new capacity sites.
- Boosts data throughput by lowering interference.
- Patented beam shaping technology maximizes coverage
- Optimized beam crossover and spacing for maximum throughput

Overview

The CCI Six/Three-Beam Special Events Antenna is an LTE ready multi-beam, multi-band antenna that simultaneously supports (6) high band and (3) low band sectors from a single antenna. This Six/Three-Beam Antenna is intended for use at sporting and entertainment venues where social media and the ability to share photos and videos demand high capacity and high data rates. The high band ports provide coverage for PCS 1900 MHz band while the low band ports provide SMR 800 and Cellular 850 MHz capability in a compact, three foot (1.0 m) high single enclosure. Each beam is fed by a pair of +45° and -45° cross-polarized ports. The high band beams are each roughly 15 degrees apart and each pair are evenly juxtaposed on the three low band beams. This antenna segments large audiences into multiple sectors thus enabling maximum spectrum re-use by sectorization, providing as much as nine times increase in network capacity. Our unique beam shaping technology provides fast roll off between beams, minimizing interference between sectors thus increasing the carrier to interference plus noise (CINR) ratio and lowering soft handover losses in LTE, UMTS/HSPA+ and CDMA/EVDO networks. Such an approach enhances data transfer rates within LTE, UMTS and EVDO network sectors and addresses "hotspots" in mobile wireless operator networks.

The single panel design of the CCI Six/Three-Beam Special Event Antenna offers the opportunity to reduce antenna count and directly replaces multiple narrow beam antennas. The antenna minimizes the need for optimization as each beam is spaced optimally for maximum throughput thus providing significant CAPEX and OPEX cost savings.

CCI antennas are designed and produced to ISO 9001 certification standards for reliability and quality in our state-of-the-art manufacturing facilities.

Applications

- Upgrade of data-throughput or capacity constrained sites
- Spectrum limited markets
- Deferral of CDMA/EVDO or UMTS/HSPA+ carrier adds
- Spectrum clearing and refarming



Antennas

SPECIFICATIONS

Six/Three Beam Special Events Antenna

MBA6-11F-CP-H3

Electrical

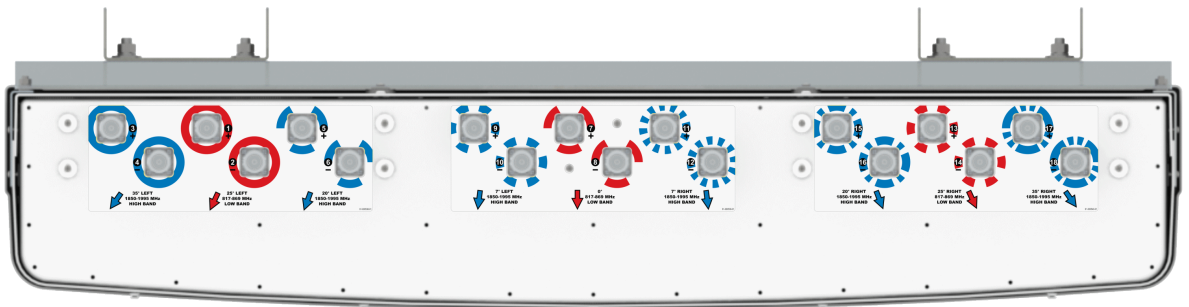
Ports	6 × Low Band Ports for 817-869 MHz	12 × High Band Ports for 1850-1995 MHz
Frequency Range	817-869 MHz	1850-1995 MHz
Gain	18.3 dBi	22.4 dBi
Azimuth Beamwidth (-3dB)	3 x 15.4°	6 x 8.3°
Azimuth Beam Crossover (Typ.)	-10 dB	-10.5 dB
Elevation Beamwidth (-3dB)	20.1°	11.4°
Electrical Downtilt	6°	4°
Elevation Sidelobes (1st Upper)	< -22 dB	< -20 dB
Front-to-Back Ratio @180°	> 35 dB	> 35 dB
Cross-Polar Port-to-Port Isolation	> 25 dB	> 30 dB
Interbeam Isolation	> 15 dB	> 15 dB
Interbeam Isolation (Non-Adjacent Beams)	>13 dB	>13 dB
Voltage Standing Wave Ratio(VSWR)	< 1.5:1	< 1.5:1
Passive Intermodulation (2x20W)	≤ -153 dBc	≤ -153 dBc
Input Power Continuous Wave (CW)	300 watts	300 watts
Polarization	Dual Linear 45°	Dual Linear 45°
Input Impedance	50 ohms	50 ohms
Lightning Protection	DC Ground	DC Ground

Mechanical

Dimensions (LxWxD)	40.8x55.0x10.2 in (1036x1398x259 mm)
Survival Wind Speed	> 150 mph (> 241 kph)
Front Wind Load ¹	425 lbf @ 100 mph 1892 N @ 161 kph
Side Wind Load ¹	37 lbf @ 100 mph 166 N @ 161 kph
Effective Projective Area (EPA), Front ¹	17.2 ft ² (1.6 m ²)
Weight *	115 lbs (52 kg)
Connector	18 × 7-16 DIN female long neck
Mounting Pole	2x 2 to 5 in (5 to 12 cm)
Mounting Pole Spacing	38.4 in (976 mm)

¹Windload values calculated using CFD analysis
* Weight excludes mounting

Bottom View





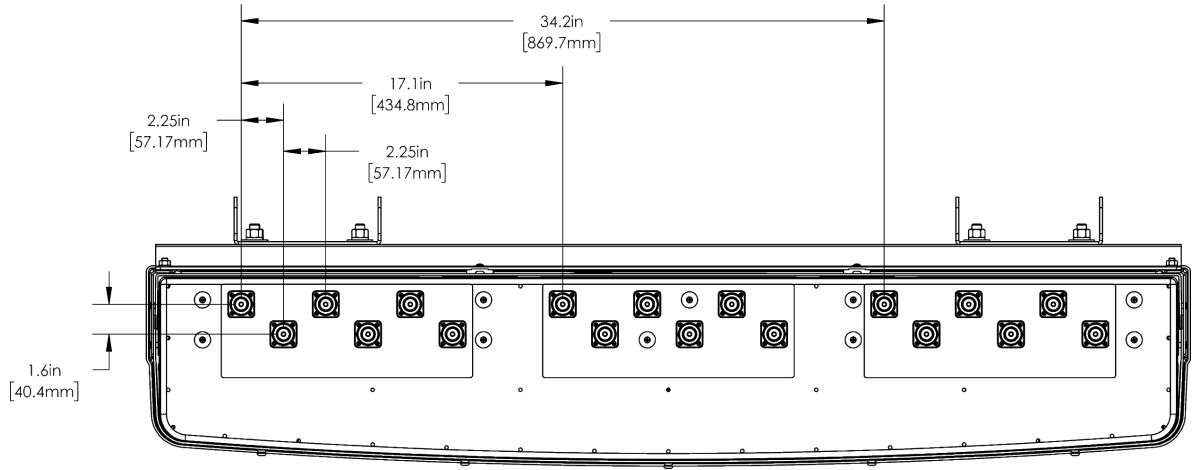
Antennas

SPECIFICATIONS Six/Three Beam Special Events Antenna

MBA6-11F-CP-H3

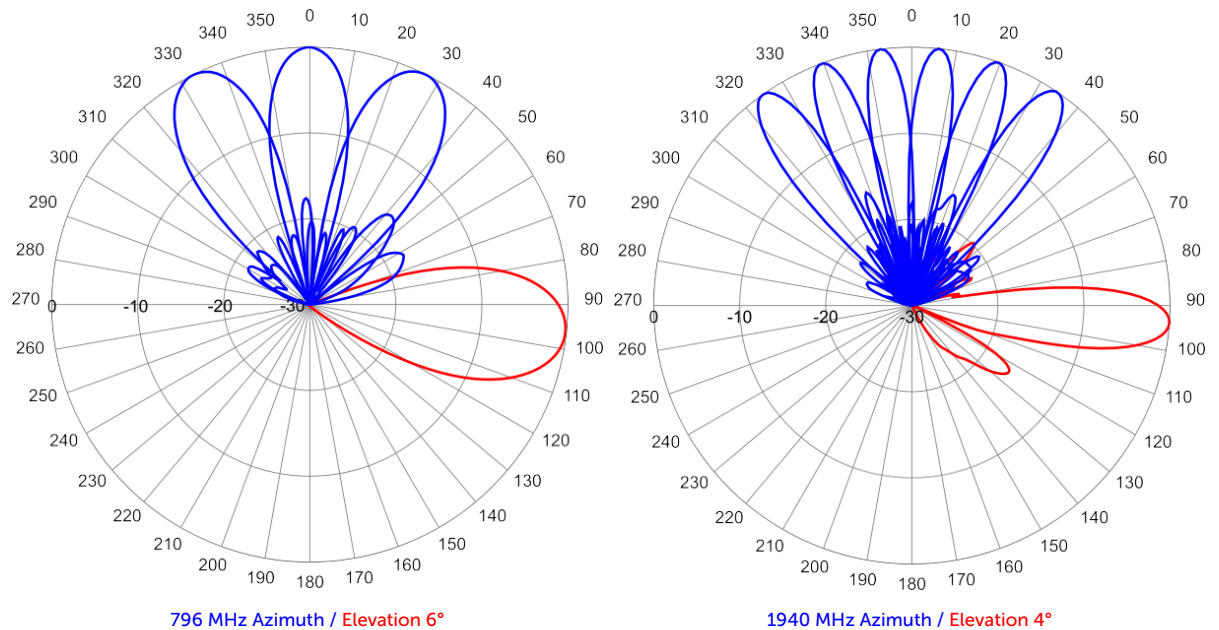
Mechanical

Connector Spacing



Typical Antenna Patterns

For detailed information on additional antenna patterns, contact customer support at support@cciproducts.com





Antennas

ORDERING

Six/Three Beam Special Events Antenna

MBA6-11F-CP-H3

Parts & Accessories

MBA6-11F-CP-H3-K Three foot (1.0 m) Antenna and two MBK-03 Mounting Brackets

MBK-03 x 2 Mounting bracket kit (top and bottom) with 0° to 12° mechanical tilt adjustment



Antennas

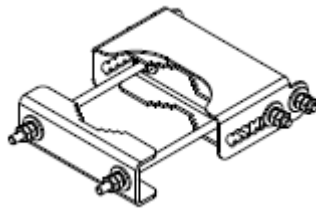
ACCESSORIES

Mounting Bracket Kit

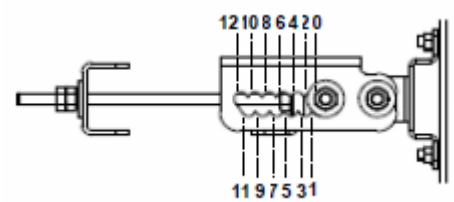
MBK-03

Mechanical

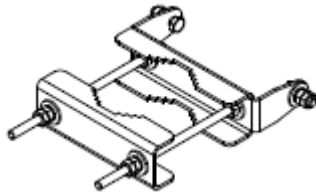
Weight	9.8 lbs (4.4 kg)
Hinge Pitch	13 in (330 mm)
Mounting Pole Dimension	2 to 5 in (5 to 12 cm)
Fastener Size	M10
Installation Torque	15 ft-lbs (20 N·m)
Mechanical Tilt Adjustment	0° - 12°



MBK-03 Top Adjustable Bracket



MBK-03 Top Adjustable Bracket Side View



MBK-03 Bottom Fixed Bracket



Antennas

STANDARDS & CERTIFICATIONS

Six/Three Beam Special Events Antenna

MBA6-11F-CP-H3

Standards & Compliance

Environmental IEC 60068-2-1, IEC 60068-2-2, IEC 60068-2-5,
 IEC 60068-2-6, IEC-60068-2-11, IEC 60068-2-14,
 IEC 60068-2-18, IEC 60068-2-27, IEC 60068-2-29,
 IEC 60068-02-30, IEC 60068-2-52, IEC 60068-2-64,
 GR-63-CORE 4.3.1, EN 60529, IP 24

Certifications

Federal Communication Commission (FCC) Part 15 Class B, ISO 9001

