

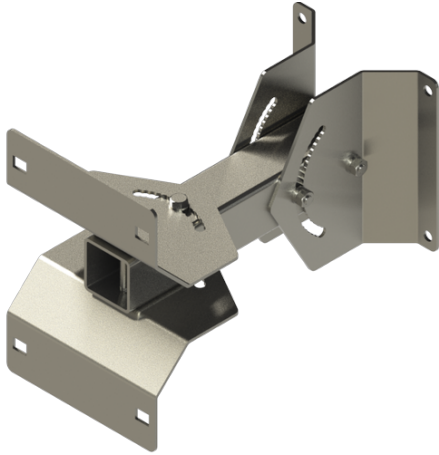


# Antennas

DATA SHEET

## Adjustable Mast Bracket

BSA-M05



- Horizontal Mechanical Tilt of ( $\pm 35^\circ$ )
- Vertical Mechanical Tilt of ( $\pm 55^\circ$ )
- Mast (2" to 5" Mast) mounting of the 2 foot Multi-Band Bi-Sector Array antenna (a.k.a. "Stadium Antenna"), when the Adjustable Mast Bracket (BSA-M05) is used in conjunction with the Mast Bracket Clamp (MBC-01)
- Wall Mounting of the 2 foot Multi-Band Bi-Sector Array antenna (a.k.a. "Stadium Antenna"), when the Adjustable Mast Bracket (BSA-M05) is used on its own

### Overview

The Adjustable Mast Bracket (BSA-M05) can be used either in conjunction with the Mast Bracket Clamp (MBC-01) when a 2" to 5" diameter mast (pipe) is used, or on its own when Wall Mounting is desired. The Stadium Antenna can be mounted Horizontally or Vertically with the Adjustable Mast Bracket, and it's Mechanical Tilt can be adjusted in both the Horizontal ( $\pm 35^\circ$ ) and Vertical ( $\pm 55^\circ$ ) directions.



# Antennas

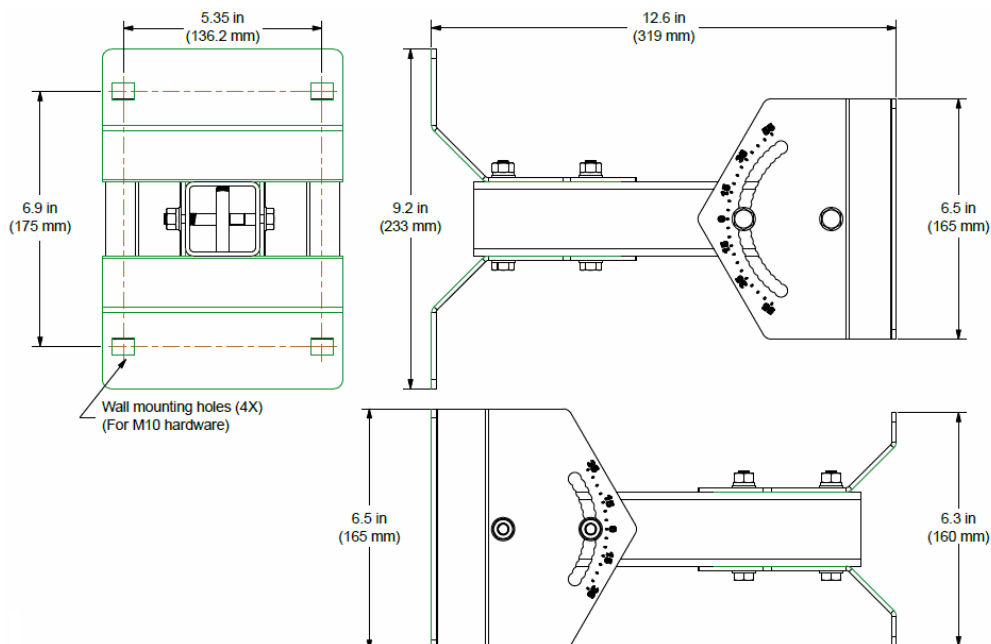
## SPECIFICATIONS

### Adjustable Mast Bracket

BSA-M05

#### Mechanical

<b>Weight</b>	7.7 lbs (3.5 kg)
<b>Hinge Pitch</b>	Horizontal( $\pm 35^\circ$ ), Vertical( $\pm 55^\circ$ )
<b>Fastener Size</b>	M10
<b>Installation Torque</b>	15 ft-lbs (20 Nm)
<b>Mechanical Tilt Adjustment</b>	Horizontal( $\pm 35^\circ$ ), Vertical( $\pm 55^\circ$ )
<b>Mounting Pole(when used with MBC-01)</b>	2 to 5 in (5 to 12 cm)



BSA-M05  
Dimensions

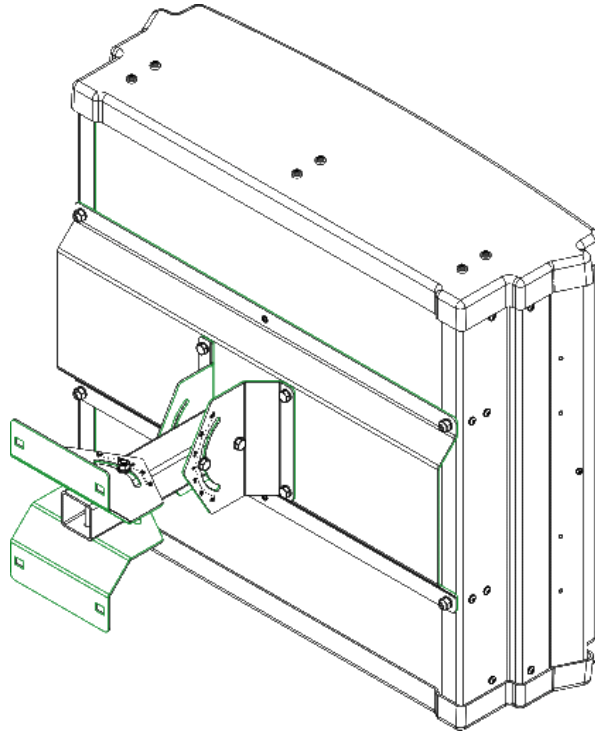


# Antennas

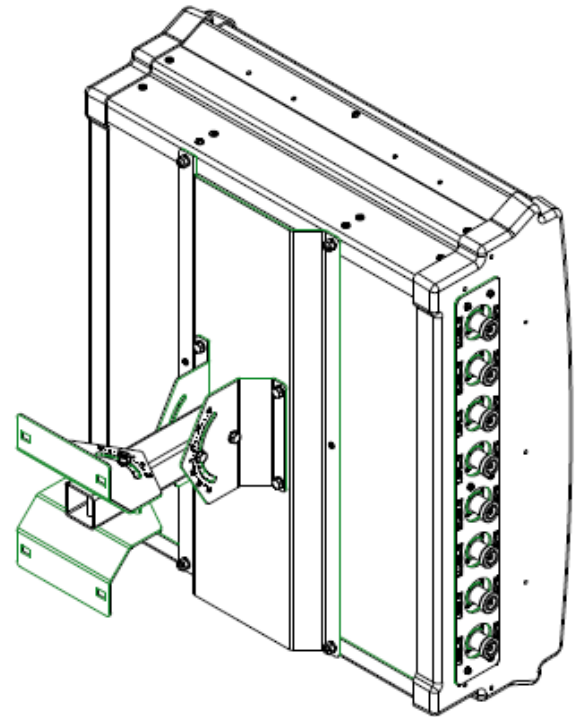
## SPECIFICATIONS

### Adjustable Mast Bracket

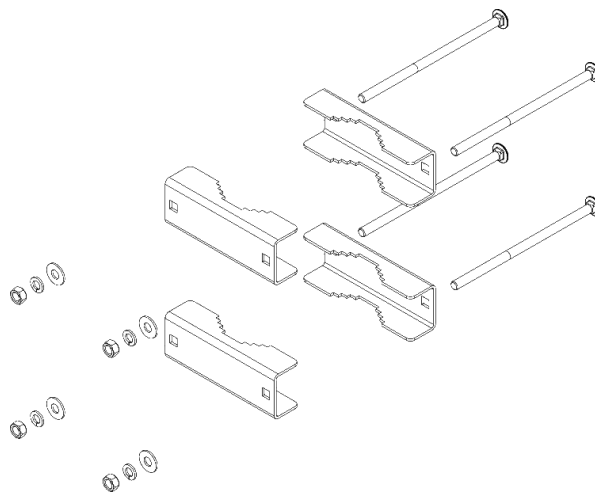
BSA-M05



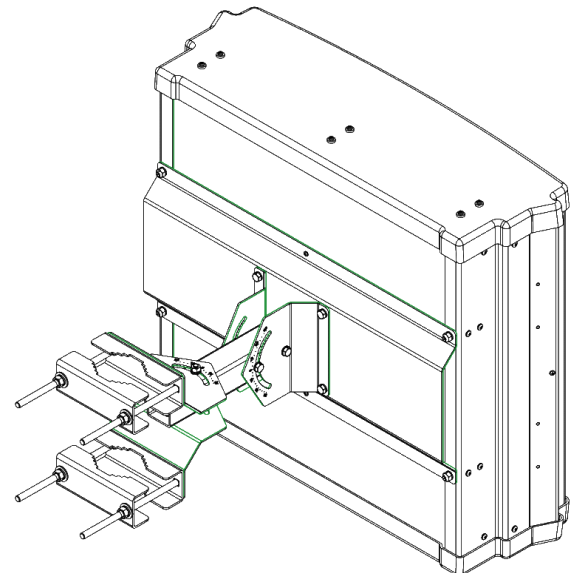
BSA-M05 horizontal mount on "Stadium Antenna"



BSA-M05 vertical mount on "Stadium Antenna"



MBC-01 Mast Bracket Clamp



BSA-M05 and MBC-01 mounting application



# Antennas

ORDERING

Adjustable Mast Bracket

BSA-M05

Parts & Accessories

BSA-M05 Adjustable mast bracket

MBC-01 Mast bracket clamp



# Antennas

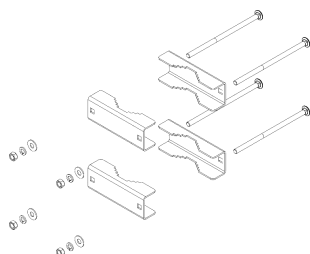
## ACCESSORIES

### Mounting Bracket Clamp

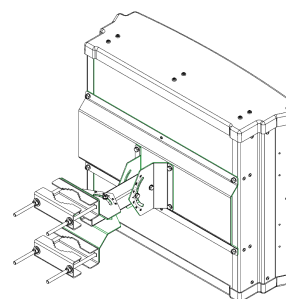
MBC-01

Mechanical

<b>Weight</b>	5.4 lbs (2.4 kg)
<b>Mounting Pole Dimension</b>	2 to 5 in (5 to 12 cm)
<b>Fastener Size</b>	M10
<b>Installation Torque</b>	15 ft-lb (20 Nm)



MBC-01



MBC-01 with BSA-M05